

# THREE • SKYVIEWPARC

## RESIDENCE H

FLOORS PH3 - PH1

2 BEDROOMS • 2 FULL BATHS

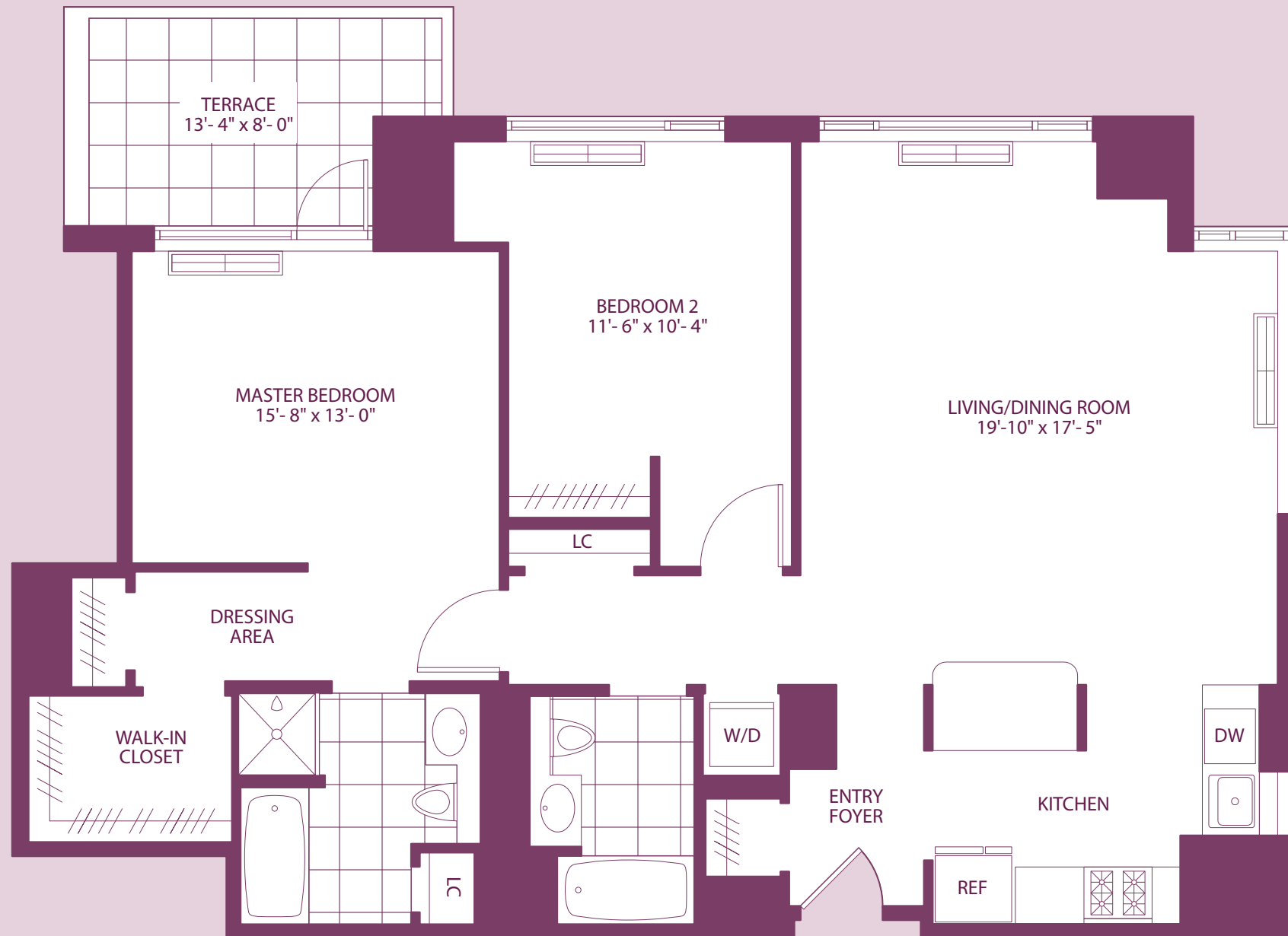
NET-1249 SQ FT • 116.0 SQ M

GROSS-1501 SQ FT • 139.4 SQ M

98 SQ FT • 9.1 SQ M TERRACE



- Entry Foyer
- Corner Living/Dining Room
- Windowed Kitchen
- Master Bedroom Suite with walk-in closet, oversized bath, separate stall shower, dressing area and Terrace access
- Washer/Dryer



NOTES

---



---



---



---



---



---

