

THREE • SKYVIEWPARC

RESIDENCE A

FLOORS PH3 - PH1

2 BEDROOMS • 2 FULL BATHS

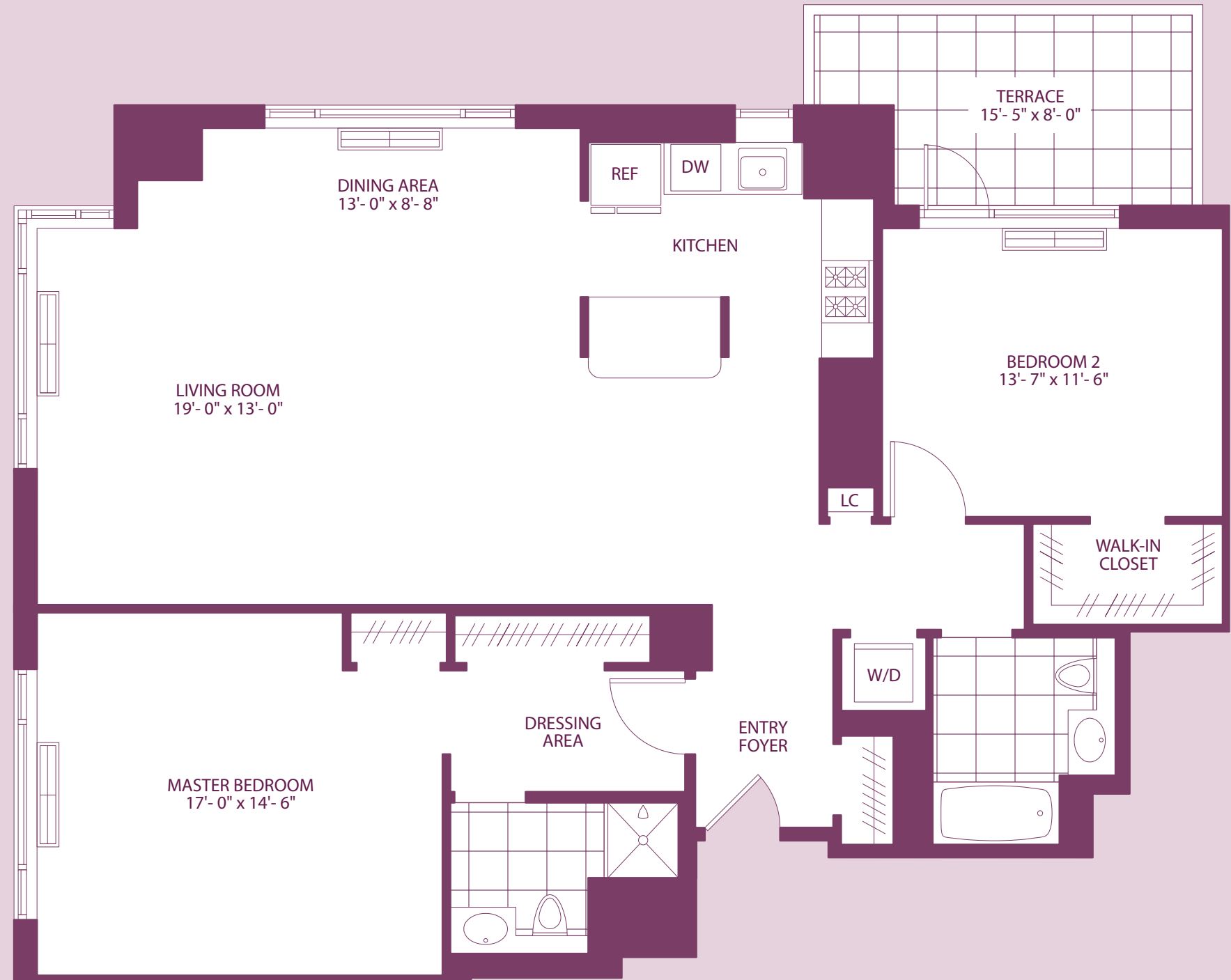
NET-1476 SQ FT • 137.1 SQ M

GROSS-1774 SQ FT • 164.8 SQ M

113 SQ FT • 10.5 SQ M TERRACE



- Entry Foyer
- Corner Living Room
- Dining Area
- Windowed Pass-through Kitchen
- Master Bedroom with en-suite bath and dressing area
- 2nd Bedroom with walk-in closet and Terrace access
- Washer/Dryer



NOTES

